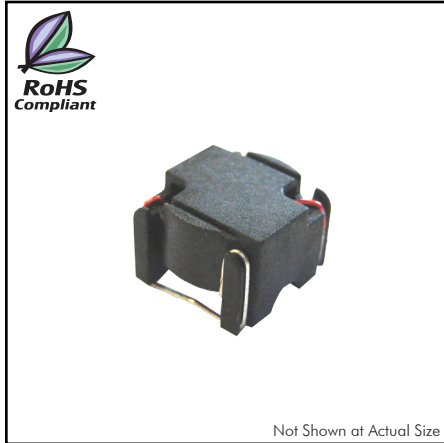


## CTSPT-L Series

### From 1.1µH to 2,000µH



### CHARACTERISTICS

**Description:** Surface mount standard toroidal inductor  
**Applications:** For use in DC/DC converters, notebooks, computers, and mobile appliances. Boost and buck switcher. Designed for SMD pick and place mounting and reflow soldering.  
**Operating Temperature:** -40°C to +125°C  
**Testing:** Tested on a HP4284A at 100kHz, 0.1 Vrms  
**Electrical Specification:** @25°C  
**Temperature Rise:** 55°C typical at I<sub>dc</sub> and 25°C ambient temperature  
**Miscellaneous:** **RoHS Compliant.** Meets UL94V-o. Operating frequency up to 1MHz  
**Additional Information:** Additional electrical & physical information available upon request  
**Samples available. See website for ordering information.**

### SPECIFICATIONS

Part Number	Inductance (no DC) ±20% (µH)	Current DC (Amp.)	Inductance (w/ DC) Typ. (µH)	DCR ±20% (Ω)	Size Code
CTSPT20LF-702M	7.0	1.40	6.20	0.070	M
CTSPT20LF-233M	23	1.00	17.6	0.125	M
CTSPT20LF-353M	35	1.40	29.7	0.166	N
CTSPT20LF-733M	73	1.30	58.1	0.290	O
CTSPT20LF-174M	170	0.94	114	0.380	N
CTSPT20LF-674M	670	0.72	383	0.862	O
CTSPT20LF-115M	1100	0.74	645	1.250	P
CTSPT20LF-205M	2000	0.71	1070	1.700	Q
CTSPT20LF-112M	1.1	3.40	1.01	0.011	M
CTSPT20LF-123M	12	2.80	9.4	0.046	N
CTSPT20LF-223M	22	2.70	16.2	0.063	O
CTSPT20LF-413M	41	2.70	29.1	0.085	P
CTSPT20LF-733M	73	2.60	50.0	0.133	Q
CTSPT20LF-522M	5.2	4.80	3.8	0.017	N
CTSPT20LF-752M	7.5	5.40	5.1	0.018	O
CTSPT20LF-143M	14	5.50	9.0	0.022	P
CTSPT20LF-263M	26	5.10	16.1	0.032	Q
CTSPT20LF-382M	3.8	8.00	2.5	0.008	O
CTSPT20LF-792M	7.9	7.80	4.9	0.012	P
CTSPT20LF-163M	16	7.20	9.3	0.019	Q

### PHYSICAL DIMENSIONS

Size Code	A	B	C	D	E	F
	Max.	Max.	Max.			
<b>M</b>	0.340	0.340	0.270	0.260	0.300	0.270
<b>N</b>	0.435	0.440	0.378	0.350	0.400	0.360
<b>O</b>	0.560	0.565	0.360	0.450	0.520	0.460
<b>P</b>	0.590	0.615	0.390	0.500	0.550	0.510
<b>Q</b>	0.670	0.700	0.390	0.580	0.620	0.590

