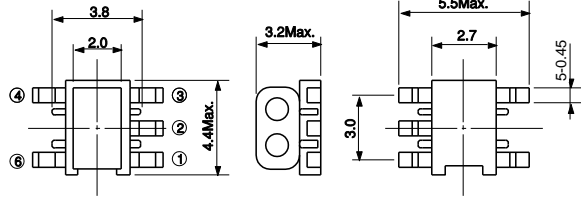
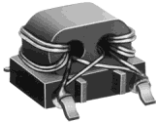


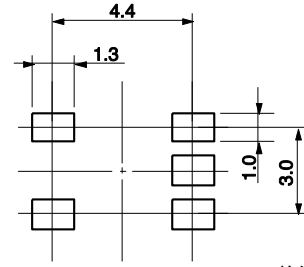
TYPE B4F/ B4F型



Recommended patterns
推荐焊盘尺寸



(Unit: mm) (单位:毫米)

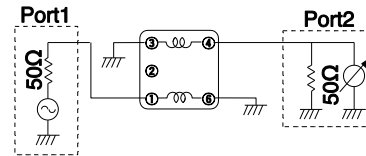


(Unit: mm) (单位:毫米)

Balun Transformers 平衡—不平衡变压器

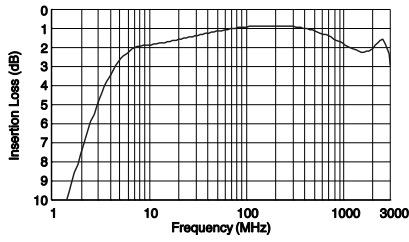
Part No.	Winding Turns	μiac
#617DB-1653=P3	2 1/2 T	300
#617DB-1654=P3	3 1/2 T	300
#617DB-1655=P3	4 1/2 T	300
#617DB-1724=P3	5 1/2 T	300

Test Circuit 测试电路

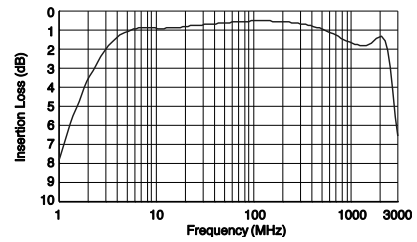


Typical Characteristics 典型特性

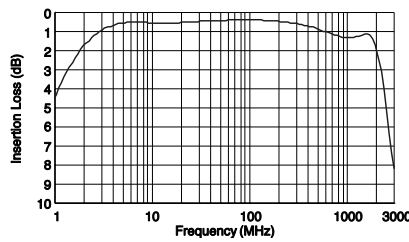
1) #617DB-1653=P3 50Ω:50Ω



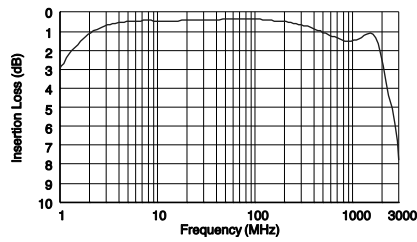
2) #617DB-1654=P3 50Ω:50Ω



3) #617DB-1655=P3 50Ω:50Ω



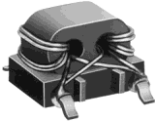
4) #617DB-1724=P3 50Ω:50Ω



TYPE B4F/ B4F Á



Recommended patterns
P9†@- p .



(Unit: mm) (< f :!2©)

(Unit: mm) (< f :!2©)

Balun Transformers ©>— 1 C ©>— Á ž

Part No.	Winding Turns	Rac
#617DB-1643=P3	2 1/2 T	1500
#617DB-1644=P3	3 1/2 T	1500
#617DB-1645=P3	4 1/2 T	1500
#617DB-1646=P3	5 1/2 T	1500

Test Circuit #*B +kD%

Typical Characteristics ® Á[]

1) #617DB-1643=P3 50 : :50 :

2) #617DB-1644=P3 50 : :50 :

3) #617DB-1645=P3 50 : :50 :

4) #617DB-1646=P3 50 : :50 :