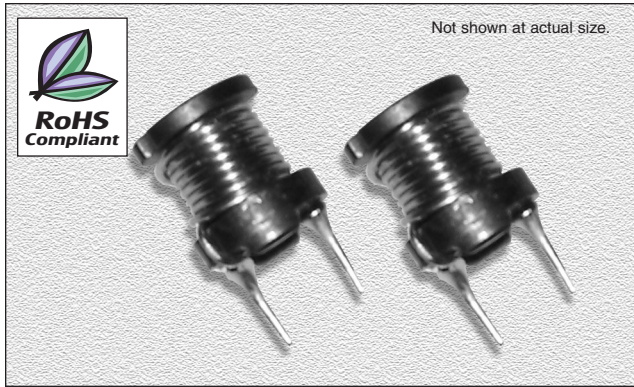


CTCH895F Series

From 10 μH to 47,000 μH

SPECIFICATIONS

Parts numbers indicate available inductance tolerance.
K = $\pm 10\%$, M = $\pm 20\%$



CHARACTERISTICS

Description: Radial leaded fixed inductor

Applications: Ideal for use as a power choke coil in switching power supply, TV sets, video appliances, and industrial equipment as well as use as a peaking coil in filtering applications

Inductance Tolerance: $\pm 10\%$, $\pm 20\%$

Testing: Tested on a HP4285A or HP4284A at specified frequency

Packaging: Bulk packaging

Rated Current: The rated D.C. current indicates the value of current when the inductance is 10% lower than its initial value at D.C. superposition or D.C. current when at $\Delta t = 40^\circ\text{C}$ whichever is lower. ($T_a = 20^\circ\text{C}$)

Miscellaneous: RoHS Compliant

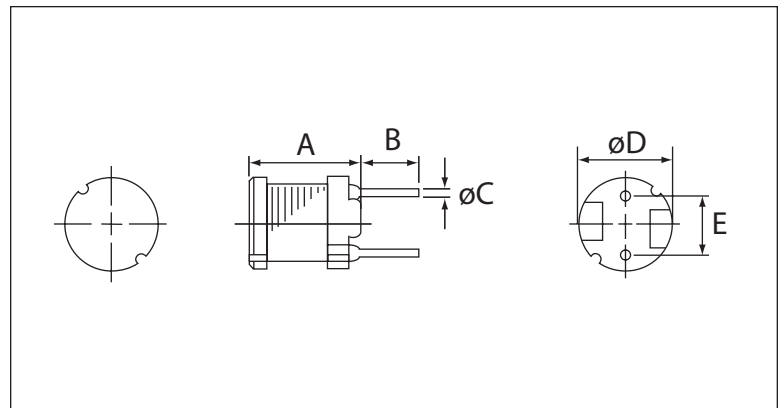
Additional Information: Additional electrical & physical information available upon request

Samples available. See website for ordering information.

Part Number	Inductance (μH)	Test Freq. (Hz)	DCR Max. (Ω)	Rated DC (A)
CTCH895F-100M	10	2.52M	0.04	2.60
CTCH895F-120M	12	2.52M	0.04	2.60
CTCH895F-150K	15	2.52M	0.05	2.10
CTCH895F-180K	18	2.52M	0.05	2.00
CTCH895F-220K	22	2.52M	0.06	1.70
CTCH895F-270K	27	2.52M	0.06	1.60
CTCH895F-330K	33	2.52M	0.07	1.40
CTCH895F-390K	39	2.52M	0.08	1.40
CTCH895F-470K	47	2.52M	0.10	1.30
CTCH895F-560K	56	2.52M	0.11	1.20
CTCH895F-680K	68	2.52M	0.14	1.10
CTCH895F-820K	82	2.52M	0.16	1.00
CTCH895F-101K	100	1.00k	0.19	0.90
CTCH895F-121K	120	1.00k	0.22	0.82
CTCH895F-151K	150	1.00k	0.27	0.74
CTCH895F-181K	180	1.00k	0.31	0.71
CTCH895F-221K	220	1.00k	0.38	0.64
CTCH895F-271K	270	1.00k	0.53	0.57
CTCH895F-331K	330	1.00k	0.61	0.51
CTCH895F-391K	390	1.00k	0.69	0.48
CTCH895F-471K	470	1.00k	0.89	0.43
CTCH895F-561K	560	1.00k	1.01	0.40
CTCH895F-681K	680	1.00k	1.18	0.35
CTCH895F-821K	820	1.00k	1.57	0.32
CTCH895F-102K	1000	1.00k	1.84	0.30
CTCH895F-122K	1200	1.00k	2.10	0.27
CTCH895F-152K	1500	1.00k	2.80	0.23
CTCH895F-182K	1800	1.00k	3.21	0.21
CTCH895F-222K	2200	1.00k	4.21	0.19
CTCH895F-272K	2700	1.00k	4.94	0.17
CTCH895F-332K	3300	1.00k	6.16	0.15
CTCH895F-392K	3900	1.00k	6.84	0.14
CTCH895F-472K	4700	1.00k	7.89	0.13
CTCH895F-562K	5600	1.00k	11.50	0.12
CTCH895F-682K	6800	1.00k	13.20	0.11
CTCH895F-822K	8200	1.00k	15.20	0.10
CTCH895F-103K	10000	1.00k	22.00	0.089
CTCH895F-123K	12000	1.00k	25.00	0.073
CTCH895F-153K	15000	1.00k	29.10	0.068
CTCH895F-183K	18000	1.00k	38.90	0.066
CTCH895F-223K	22000	1.00k	44.90	0.059
CTCH895F-273K	27000	1.00k	55.70	0.052
CTCH895F-333K	33000	1.00k	64.20	0.048
CTCH895F-393K	39000	1.00k	74.20	0.042
CTCH895F-473K	47000	1.00k	96.40	0.038

PHYSICAL DIMENSIONS

Size	A Max.	B	C	D	E
mm	9.5	5.0 \pm 1.0	0.7+0.1,-0.05	7.8 \pm 0.5	5.0 \pm 0.3
inches	0.37	0.20 \pm 0.04	0.027+0.004,-0.002	0.30 \pm 0.02	0.20 \pm 0.012



12.07.06