

MILITARY PRODUCTS

Through-hole Toroidal Inductors MS 21422 - Series 92 Qualified Product Listed MIL-PRF-15305

IN	MM
1.00	25.4
0.260	6.60
0.200	5.08
0.100	2.54
0.050	1.27
0.03	0.76
0.015	0.38
0.010	0.26

MS21422 SERIES 92 and 92S

MS21422 Dash Number	VE Part Number	Side-Lead Part Number	Apparent Inductance uH	Min. Q	Test Freq. MHz	Min. SRF Mhz	DCR Ohms Max.	Rated DC Current mA
-01	9201	9201S	0.10	55	25	450	0.04	2200
-02	9202	9202S	0.12	60	25	400	0.05	2000
-03	9203	9203S	0.15	60	25	350	0.06	1800
-04	9204	9204S	0.18	60	25	320	0.07	1600
-05	9205	9205S	0.22	65	25	300	0.08	1500
-06	9206	9206S	0.27	65	25	280	0.10	1400
-07	9207	9207S	0.33	65	25	260	0.11	1300
-08	9208	9208S	0.39	65	25	240	0.14	1200
-09	9209	9209S	0.47	65	25	220	0.17	1100
-10	9210	9210S	0.56	70	25	200	0.22	1000
-11	9211	9211S	0.68	70	25	180	0.27	900
-12	9212	9212S	0.820	70	25	160	0.30	800
-13	9213	9213S	1.0	70	25	150	0.35	750
-14	9214	9214S	1.2	60	7.9	130	0.40	700
-15	9215	9215S	1.5	60	7.9	120	0.50	630
-16	9216	9216S	1.8	60	7.9	110	0.70	530
-17	9217	9217S	2.2	60	7.9	100	0.90	470
-18	9218	9218S	2.7	60	7.9	90	1.1	420
-19	9219	9219S	3.3	60	7.9	70	1.3	390
-20	9220	9220S	3.9	60	7.9	60	1.5	360
-21	9221	9221S	4.7	60	7.9	50	1.8	330
-22	9222	9222S	5.6	60	7.9	45	2.0	310
-23	9223	9223S	6.8	60	7.9	40	2.2	300
-24	9224	9224S	8.2	60	7.9	37	2.4	290
-25	9225	9225S	10	60	7.9	35	2.6	280

GENERAL SPECIFICATIONS SERIES 92 and 92S

FOR APPLICATION IN PRINTED CIRCUITS AND MODULES.

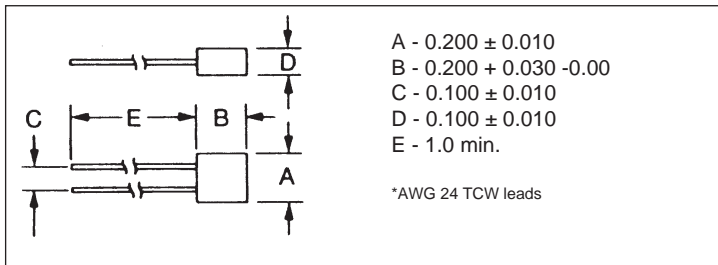
- Moisture and shock resistant, immersion proof.
- Designed to meet MIL-C-15305, Grade 1, Class B, toroids will operate at any temperature from -55°C to + 125°C.
- The low external magnetic field of the toroid permits tighter packaging of units than with other inductive devices.
- Maximum operating temperature: 125°C
- Rated temperature rise (at 90°C): 35°C
- Dielectric withstanding voltage: 700v rms
- Terminal pull: 5 pounds
- Altitude rating: 70,000 feet
- Overload current: 1.4 times the rated current

SPECIFICATIONS

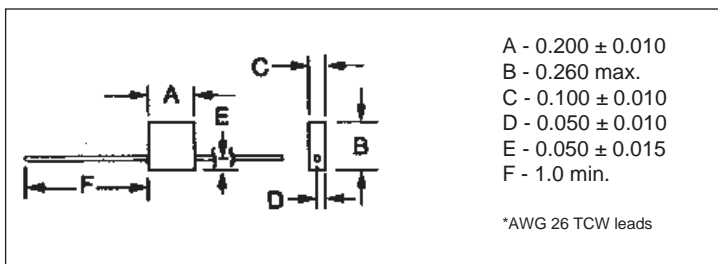
- Frequency range: 1 to 50 MHz
- Inductance tolerances: 0.10 to 0.82 uH, ±10%; 1.0 to 10 uH, ±5%; (closer tolerances on request)
- Maximum dissipation: 1/5-watt
- Inductance TC: +20 ppm/°C nominal; +50 ppm/°C max.
- Leads: tin-lead coated copper wire

Information on Test Fixtures, Test Equipment & Q Curves can be found in the Technical Information section of website

DIMENSIONAL DATA 92 SERIES



DIMENSIONAL DATA 92S SERIES



92 & 92S SERIES

VANGUARD ELECTRONICS
 (714) 842-3330 WWW.VE1.COM